

IN SPEED  
WE TRUST

# MXR

The Micro Rider

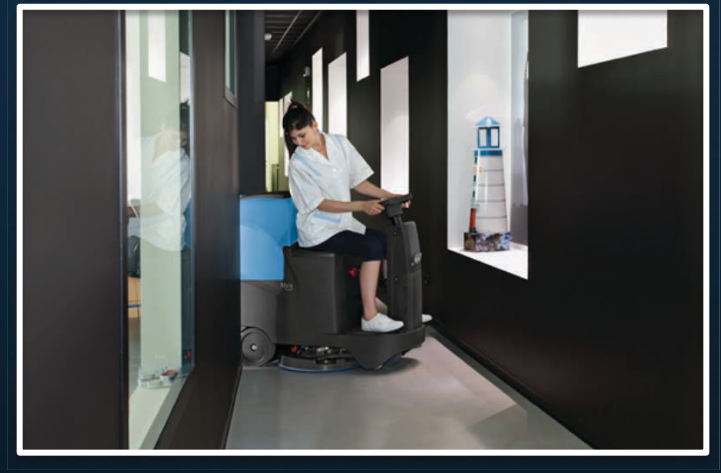


*"...it is not necessary to be BIG in order to be GREAT ..."*

# CONCEPT

1. TO REDUCE THE COST PER SQ. M. CLEANED
2. TO CHANGE CLEANING METHOD/SYSTEM

- SMALL
- SILENT
- FAST
- EASY
- SUSTAINABLE
- AFFORDABLE



# SMALL

**SMALL**, like a walk-behind scrubbing machine  
**BIG** in terms of performance, like a ride-on model



# MANOEUVRABLE

## DESIGN

The lowered footboard and access from both sides make it safer and more practical



Minimum  
aisle turn



# MANOEUVRABLE

Mxr

**SCRUBS AND DRIES IN THE SAME AREAS WHERE  
A WALK-BEHIND SCRUBBING MACHINE WOULD NORMALLY BE USED,  
BUT IT'S FASTER AND MORE COMFORTABLE**



**Cleans perfectly  
along walls  
without any need  
for manual  
cleaning  
operations**



# FAST

POSSIBILITY TO WORK AT DOUBLE THE SPEED  
OF A WALK-BEHIND SCRUBBING MACHINE

**(6 Km/h)**

The operator remains comfortably seated and can easily move in limited spaces, quickly passing from one area to another - even in a lift - in total safety and without having to get off the machine.



# SILENT



The low noise level means the machine can be used anywhere, at any time, without disturbing the people nearby and safeguarding the operator's health

\* With Eco Mode button on (Device to reduce noise level)



54 dB (A)\*



# ERGONOMIC



Designed to offer  
a new driving experience

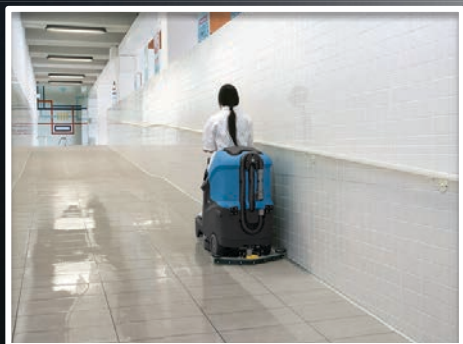
Light and smooth steering  
to increase manoeuvrability



User-friendly digital display

# SAFE

Low centre of gravity and excellent weight distribution, to ensure the utmost stability even on slopes



Automatic reduction of speed on bends



ANTI-OVERTURN BUMPER



EMERGENCY STOP  
Immediate machine stop, just by pressing a single button

SAFETY BRAKE  
Automatic machine stop when the pedal is released

# VERSATILE

On board battery charger

Can be customized with accessories to increase productivity



2 different working widths



Splash guards



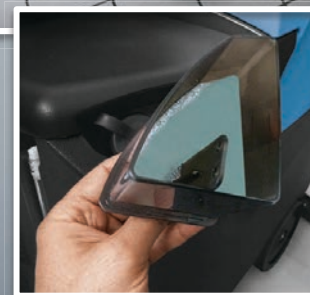
# EASY

## Colour code (Yellow)

At the end of his work-shift, the operator can quickly see which parts need sanitizing, without wasting any time.



FFF (FimapFastFill)  
Quick filling of the  
solution tank



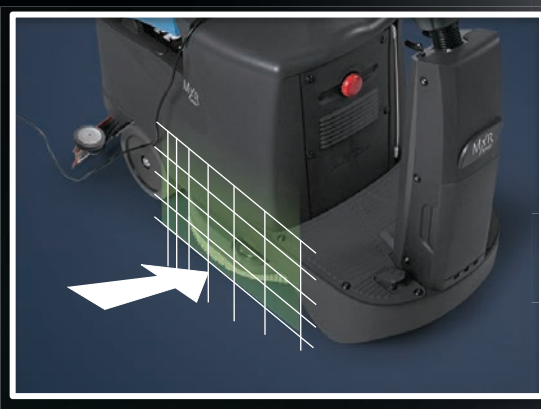
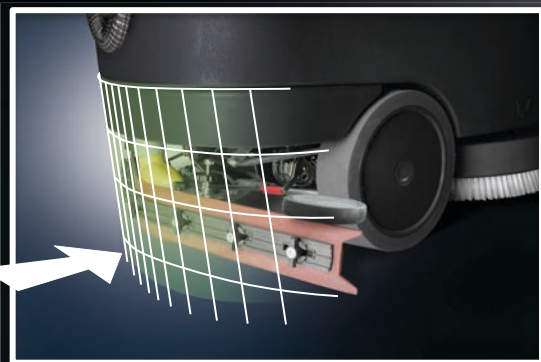
Measuring cap  
to add the proper  
detergent percentage

# WITHOUT ANY TOOLS

# ROBUST

*"...To interpret **STRENGTH** as a challenge..."*

All the components are protected inside the machine unit.  
This means less risk of breaking in case of accidental impact  
avoiding additional repair costs, and ensuring a longer  
working life



# TRACEABLE

By the steering wheel, without using a programmer, the technician can control all machine functionalities.




Warning for:

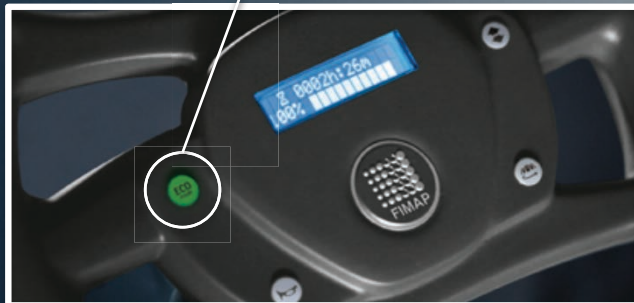
- Traction motor
- Brush motor
- Vacuum motor
- Micro switch
- Batteries

Display of instantaneous consumptions and working time of each function

# ECO-FRIENDLY

Thanks to the **Eco Mode** device the operator can manage the machine consumptions

Eco Mode Device	MODEL	
	Mxr	Mxr (FSS)
	Sound level reduction	Sound level reduction
	Energy saving	Energy saving
	-	Water and detergent saving



# ECO-FRIENDLY

Designed to respect the environment



Preserves water

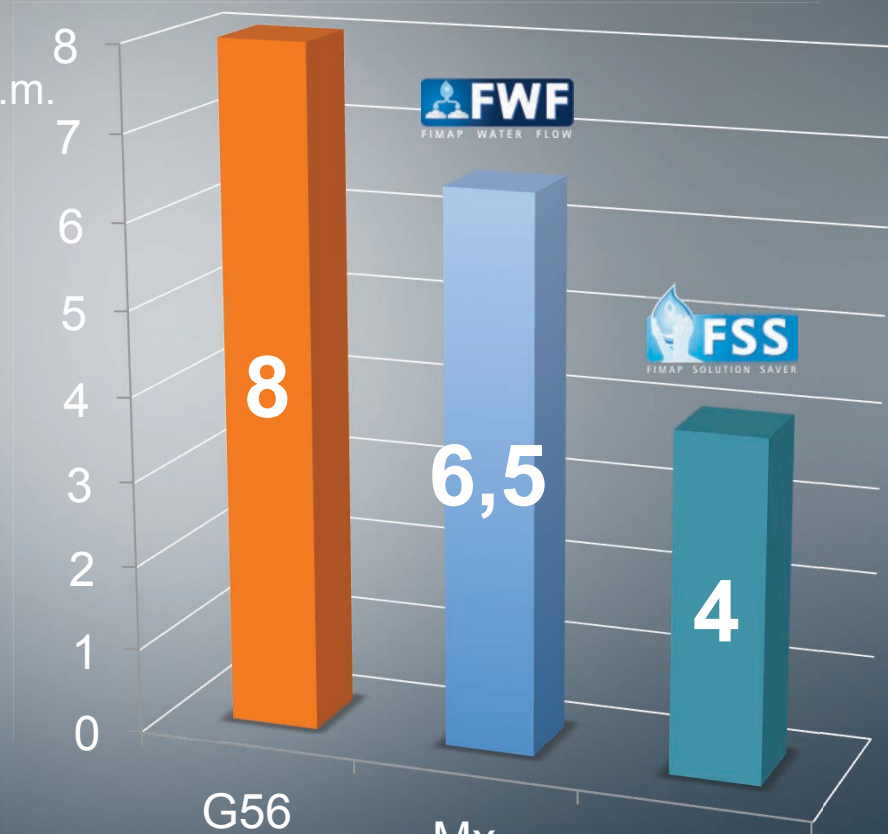


Reduces the use of  
the chemical product

Reduces detergent  
solution by up to

**50%**

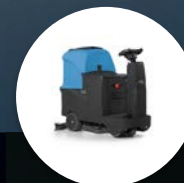
l/100 sq.m.



G56

Mx

Mxr



# ECO-FRIENDLY

Designed to respect the environment

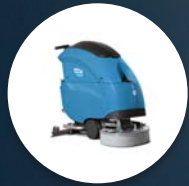


Reduces noise level



G56

70 dB (A)



Mx

58 dB (A)



Mxr

54 dB (A)\*

Noise perception  
has been reduced  
by  
**16 times**

\* With Eco Mode device on

# ECO-FRIENDLY

Designed to respect the environment



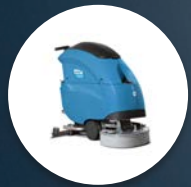
Reduces energy consumption

Reduces energy consumption by  
up to  
**53%**



G 56

**1,1**



Mx

**0,93**



Mxr

**0,52**

■ Energy consumption  
wh/sq.m.

0

0,5

1

1,5

**Designed to respect  
the environment**



**Increases safety**

**Mxr leaves a floor  
dry and safe  
reducing the possibility  
of slip and fall accidents**

# ECO-FRIENDLY

Designed to respect the environment

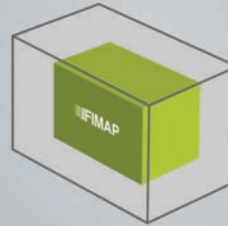


Reduces packaging volumes and therefore the number of transportation means required

## PACKAGING VOLUME



1,9 m<sup>3</sup>



1,1 m<sup>3</sup>

- 42%

Packaging volume reduction



(A 40ft container can hold 53 machines instead of 23)



-52%

CO<sub>2</sub> reduction

-50%

Transport costs reduction

# ECO-FRIENDLY

Designed to respect the environment



Uses recyclable materials

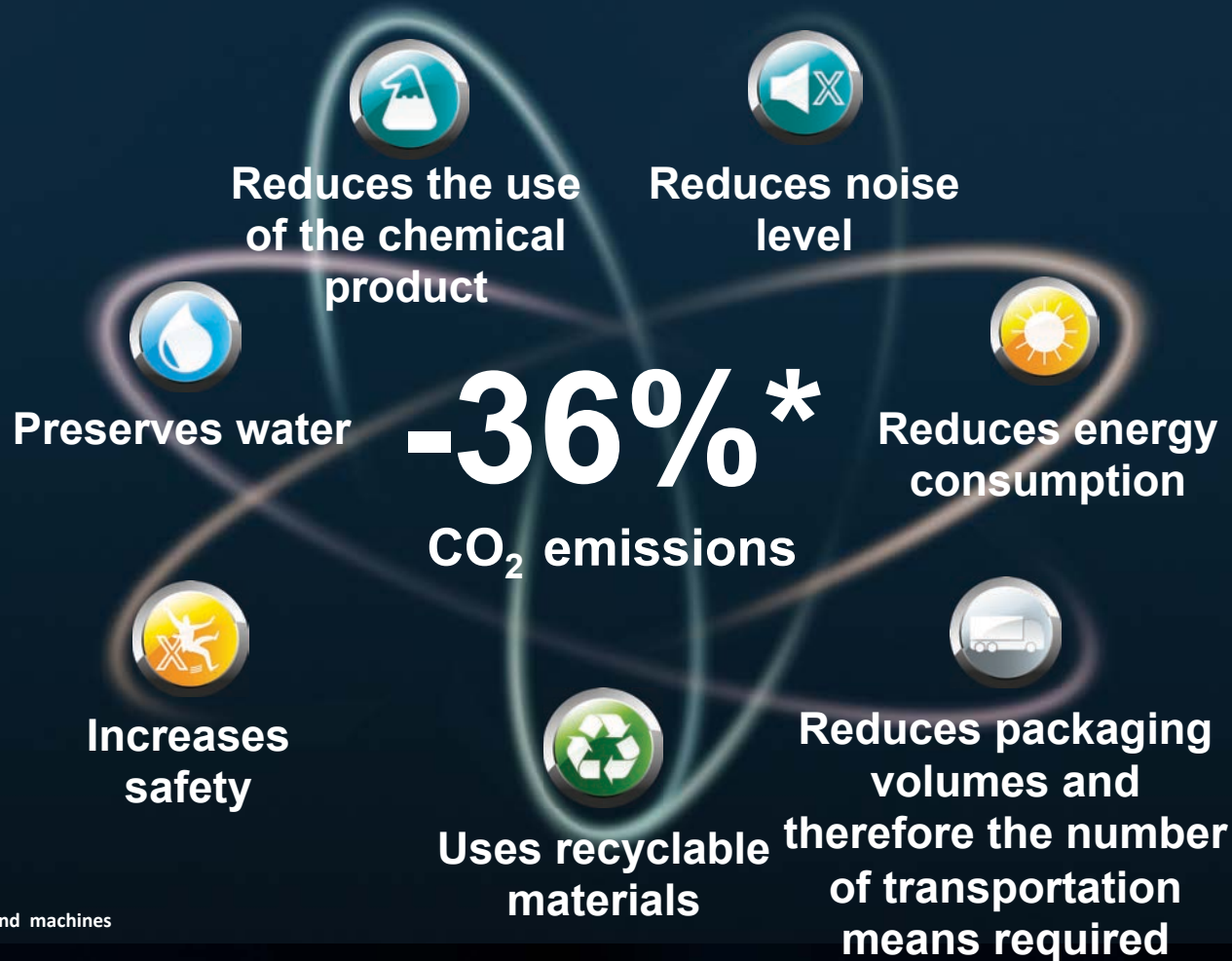
	Alluminium	Electrical / Motors / Engines	Ferrous metals
% recyclable	100%	29%	100%

	Harnesses / Cables	Liquids	Plastic / Rubber	Polyethylene
% recyclable	80%	100%	40%	92%

**65%** recyclable

# SUSTAINABLE

Mxr aims to offer reduced environmental impact, in both the production and usage phases



\* In specific tests vs walk-behind machines

# Field test results

## GOAL

### Survey:

- Manoeuvrability
- User-friendly
- Performance level
- Overall satisfaction

## SITE:

- 800-2.000 sq. m.
- With heterogeneous activities
- Frequent maintenance cleaning

## METHOD AND SURVEY SUBJECT:

- Daily survey
- Working and operation time and number of Pit-Stops

# Field test results

## WORKING TIME SURVEY ON TEST SITES (daily test)

Scrubbing machine	Site 1 h / cleaning operation	Site 2 h / cleaning operation	Site 3 h / cleaning operation	Site 4 h / cleaning operation	Site 5 h / cleaning operation	TOTAL h /cleaning operation	AVERAGE h /cleaning operation
Walk-behind	1,1	1,7	2,9	0,7	1,0	<b>7,4</b>	<b>1,48</b>
Mxr (on board)	0,75	1,05	2,0	0,5	0,7	<b>5</b>	<b>1</b>

**33%**

**time saved with Mxr**

# Field test results

User satisfaction level using a scale from 1 to 10

Analyzed features	Site 1	Site 2	Site 3	Site 4	Site 5	TOTAL
<b>Productivity</b> Manoeuvrability in small areas – Speed – Tank autonomy – Drying – Sound level	8	8,4	9,4	9,6	10	<b>9,08</b>
<b>Daily maintenance</b> Tank emptying – Cleaning of: tanks, vacuum filter, squeegee	8	9	10	10	9,25	<b>9,25</b>
<b>Ergonomics</b> Comfort – User-friendliness – User satisfaction	9	9	10	8	8	<b>8,8</b>
<b>Aesthetics / Design</b> Details	9	7	10	9	10	<b>9</b>

# 9,0

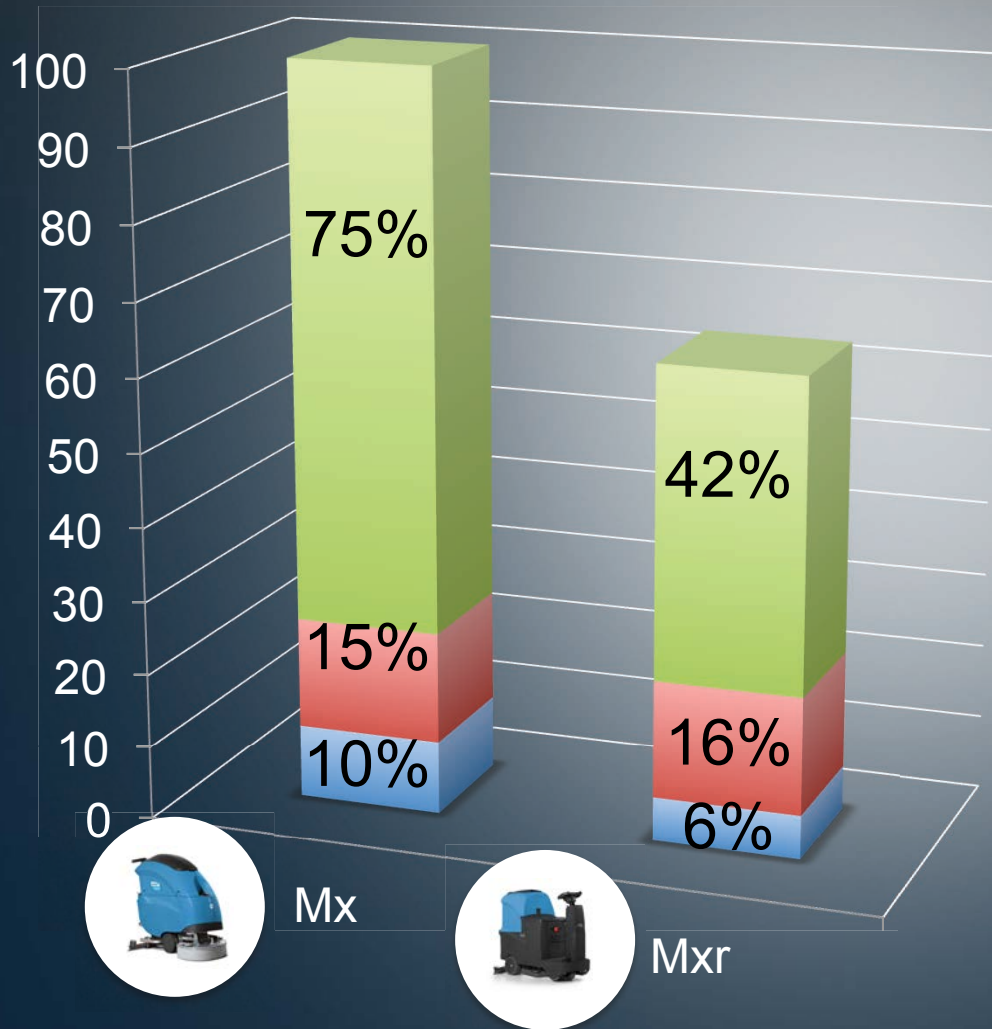
Average satisfaction rating

# Field test results

## USER FEEDBACK

- “Amazing manoeuvrability”
- “I want it!”
- “I don’t want to walk anymore! I prefer to work while sitting!”
- “Extremely user-friendly”
- “Can I order it now?”
- “Unbelievable! Working time reduced by 40%”

# AFFORDABLE

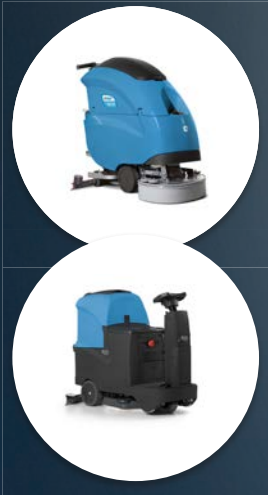


Costs reduced by  
up to  
**36%**

- Labor costs
- Amortization
- Maintenance costs

# EFFICIENT

In 1 hour



With Mx 55 it is possible to clean **757 sq.m.**

With Mxr it is possible to clean **1.420 sq.m.**

Real productivity increase of  
**43%**

Test made with maintenance cleaning carried out inside offices

# Mxr numbers

TECHNICAL DATA	Mxr
Squeegee width (mm)	705-800
Disc brush Ø (n.) (mm)	(1) 560
Brush motor (V/W)	24/450
Brush rotations (rpm)	170
Pressure on the brush (kg)	23
Vacuum motor (V/W)	24/310
Traction motor (V/W)	24/300
Suction vacuum (mbar)	700
Forward speed (km/h)	0÷5,5
Minimum aisle turn (mm)	1540
Type of forward movement	Aut.
Battery compartment measurements (L x h x l) mm	362 x 290 x 354
Gradeability (%)	20
Batteries GEL( V/Ah)	12/134
Batteries WET (V/Ah)	12/150
Batteries weight (kg)	80
Machine weight (empty without battery) (Kg)	110

# Mxr numbers



Electromagnetic  
compatibility –  
Emission standard

EN 6100-6-1, 2, 3, 4



Working  
width cm

56



Number of  
brushes

1



Supply V/  
Traction

24/aut.



Solution  
tank l

70



Recovery  
tank l

70



Working  
capacity up to  
sq.m./h

3000



Machine  
dimensions in  
mm  
L x h x l

1265  
1030  
600

**Ownership of the information and/or documents:**

All information (by which we mean all data and information with the sole exception of that of common knowledge or which FIMAP has disclosed without reserve) and all documents (drawings, photos, etc.) are the exclusive property of FIMAP and their use does not mean there is any kind of acquisition of titles, property or exploitation of rights or licences except for the limited permission of use ruled by this document.

By way of example and, therefore, not limited to, such information and/or documents can be the following:

**Marketing section:**

high definition digital images for the implementation of commercial catalogues on paper or web sites, company trademarks, original graphical documents from which texts are taken (e.g. the descriptive notes), PDF documents and original documents in .ppt format.

**Professional use of the data:**

It is a known fact that the information and/or documents, subject of this commitment, are and will be used by the beneficiary exclusively for carrying out his professional business and, therefore, no specific laws regarding consumer protection are applicable.

**Confidentiality:**

The Party that benefits from the information or use of documents taken from or, in any case, part of the commercial documentation, shall use all such information and/or documents with maximum care solely for the purposes connected to execution of this contract with FIMAP and shall:

keep such information and/or documents confidential except for those, due to their nature, which are to be disclosed (promo-advertising material etc.);

shall not divulge any information and/or document to its suppliers, collaborators or employees beyond what is strictly necessary so that they may fulfil their tasks concerning relations with FIMAP and shall ensure that the suppliers, collaborators and employees that have access to the information and/or documents are, in turn, bound by a confidentiality commitment to the benefit of FIMAP; shall not divulge any information to third parties without the prior written consent by FIMAP; copy and/or in any other way reproduce any information or document without the prior written consent of FIMAP; take all the necessary measures to protect confidentiality.

**Returning Information and/or documents:**

Whilst maintaining exclusive ownership at all times, FIMAP has the right, at any time, to ask in writing or by e-mail, that all the information and/or documents received be returned or no longer used and within the term of thirty days from receipt of this request, all the information and/or documents must be returned, including any copies, or destroy such information and/or documents and relative copies so as to prevent them from being recovered and FIMAP must be given a written declaration certifying that the information and/documents have all either been returned or destroyed.

This obligation to return, destroy or no longer use is set automatically in motion when the relationship is cancelled with FIMAP for any reason whatsoever.

**Applicable law, cancelling clauses and Court having jurisdiction:**

The interpretation, integration, execution and the effects of this commitment will be governed by Italian law.

If one or more points of this agreement are cancelled it does not invalidate the remaining points.

All disputes will be put to the exclusive jurisdiction of the Verona Courts.