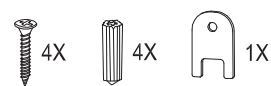
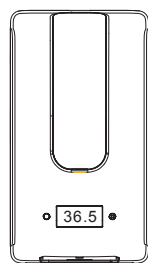
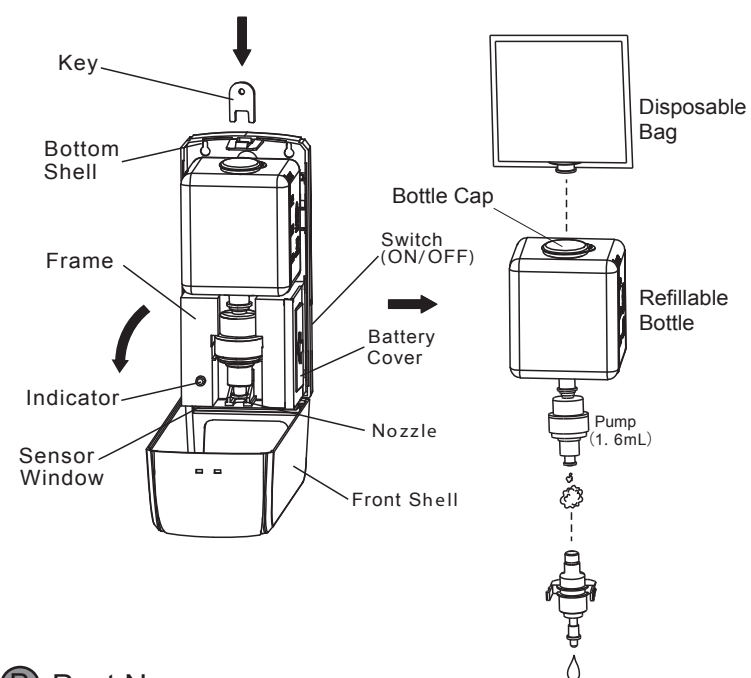


**simex**  
by clinimax

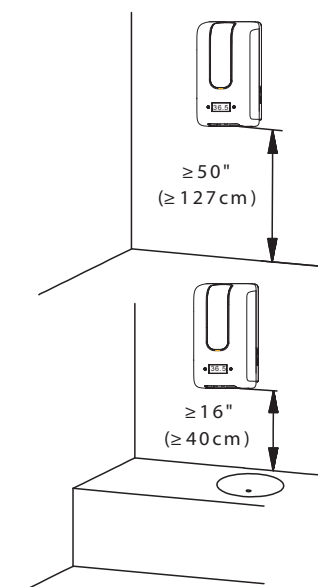
**Soap dispenser  
automatic with  
integrated thermometer**  
Ref. 04073



**A Packing List**

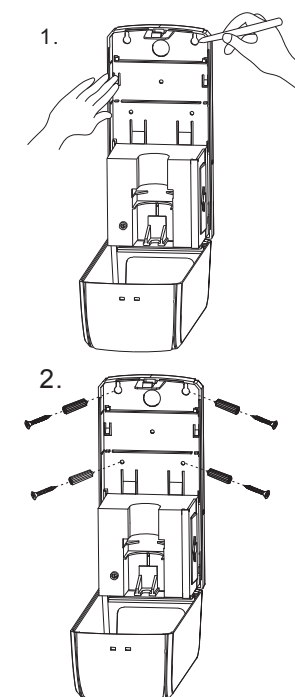


**B Part Name**

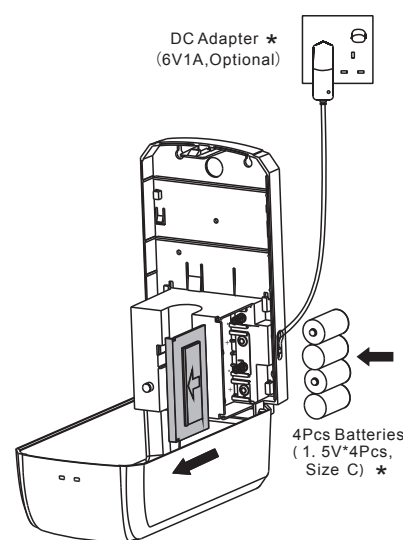


\* keep away from sunshine and humid place

**C Height from Floor/Table**

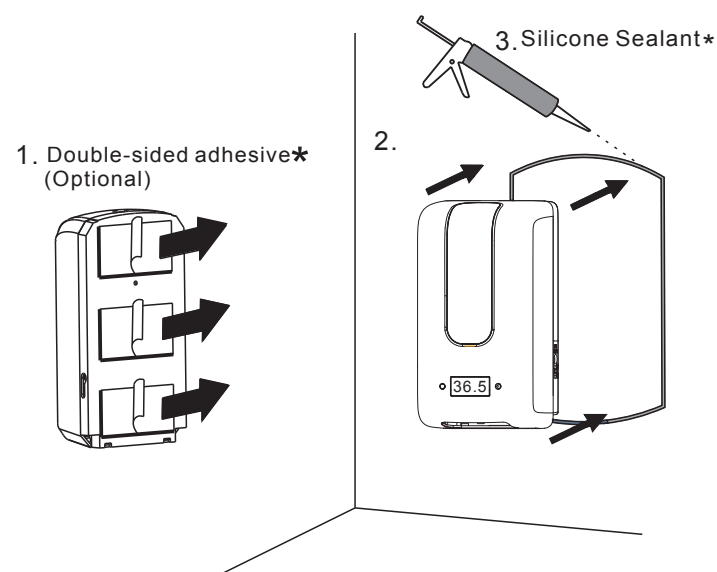


**D Way for Screw**



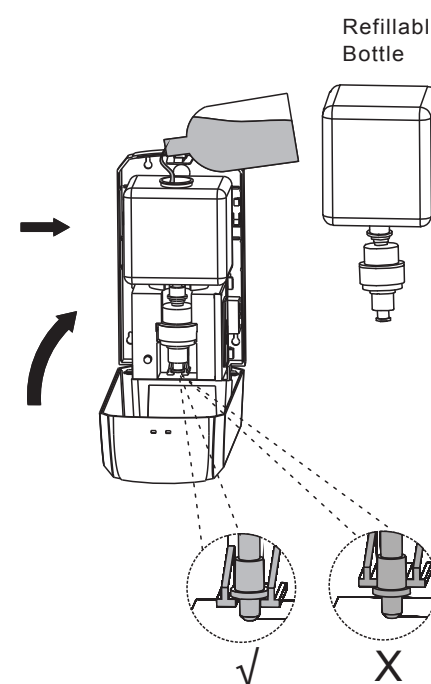
\* The Standard Packing is not including DC Adapter and Batteries

**E Install Batteries/DC Adapter**

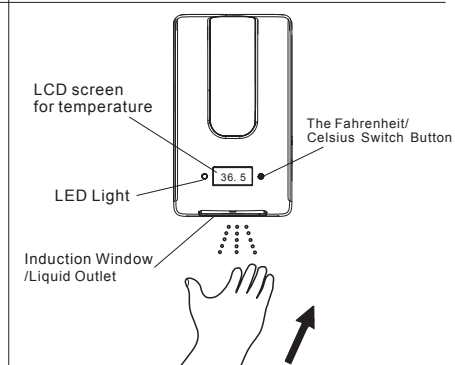


\* The standard Packing is not including Double-sided adhesive and Silicone sealant

**F Installation with Adhesive Backing (no screws)**



**G Fill Liquid**



- LED Light:
  1. green color 5 seconds flush: working condition;
  2. red color 5 seconds flush: low power for battery and change;
  3. red color 2 seconds flush: something under sensor and remove it;
- Infrared sensor (non-contact)
  1. Place hand under induction window, LCD screen shows body temperature, then the liquid flows out from the outlet.
  2. red backlight, symbol "Hi" for temperature over 42.2 °C.
  3. red backlight for temperature between 38.1 and 42.2 °C.
  4. pink backlight for temperature between 37.4 and 38 °C.
  5. blue backlight for temperature between 32 and 37.3 °C.
  6. blue backlight, symbol "Lo" for temperature below 32 °C.

**H Enjoy hand sanitizing**